

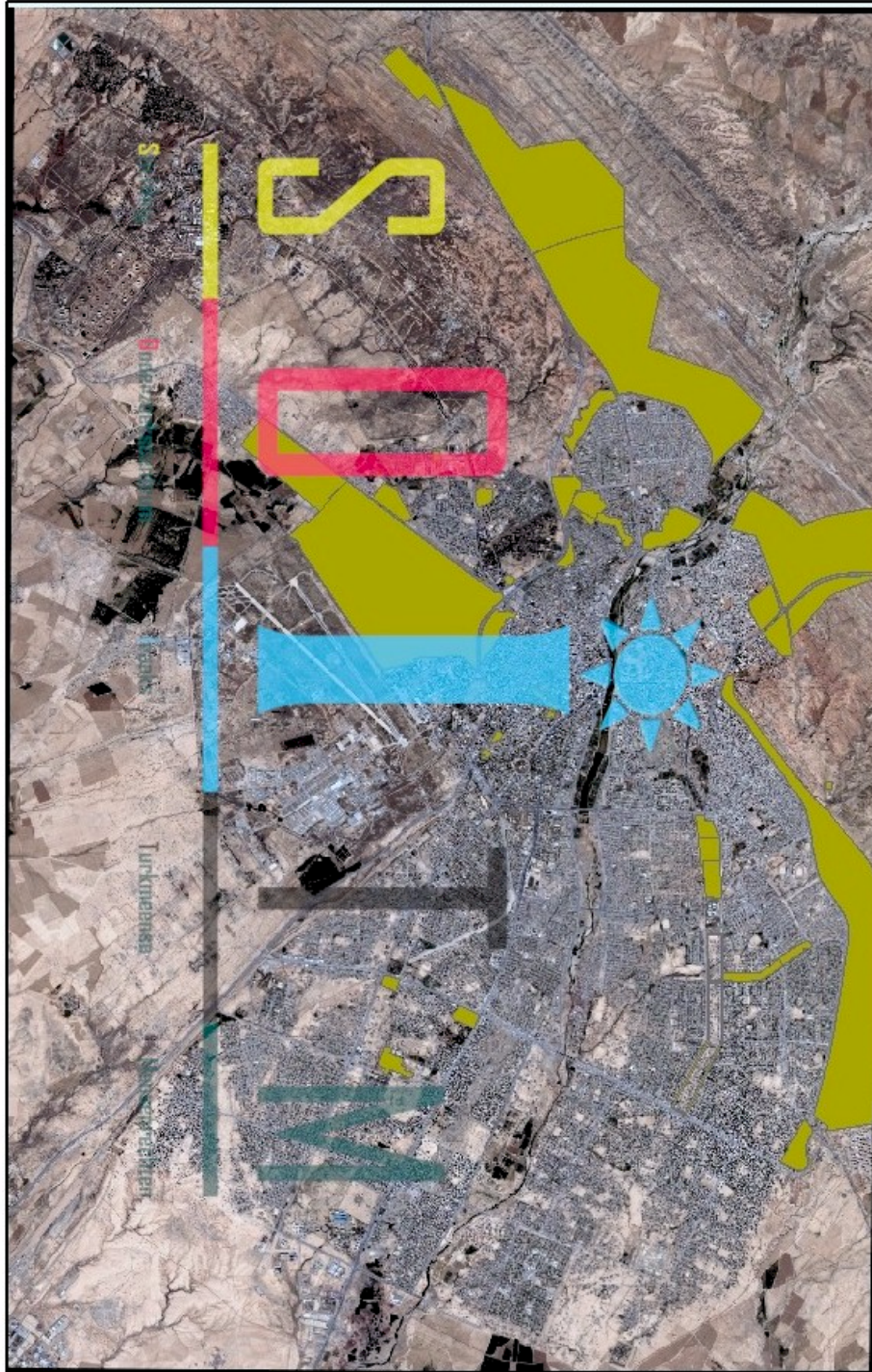
Kerkuk City:
Satellite Maps of 2002 is compared with maps of 2007



Map 1, Part of Eastern border of Kerkuk city – 2002
[Enlarge the Map](#)

Map 2, Part of Eastern border of Kerkuk city – 2007
[Enlarge the Map](#)

KIRKUK



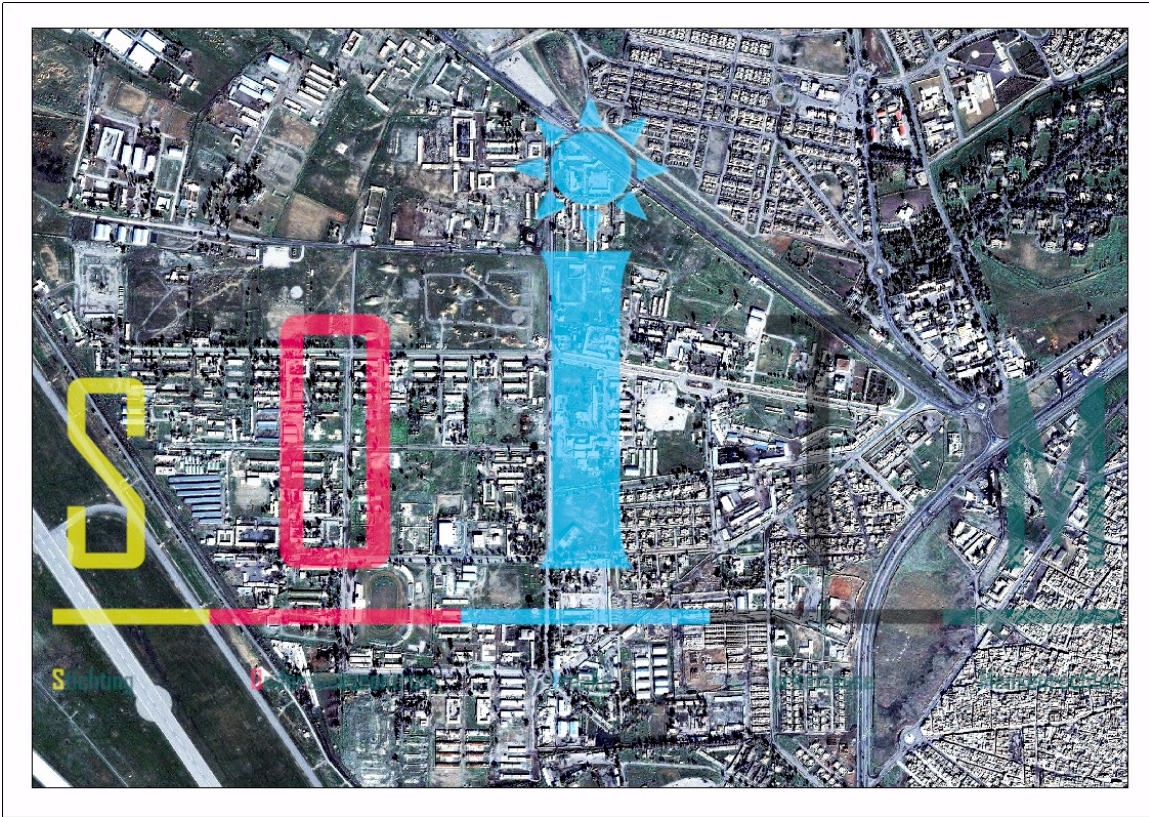
Kirkuk Research Foundation
This map shows the trespass onto the public and private lands in Kirkuk city
Kirkuk City area is approximately 76 sq.Km while the highlighted area which represents trespass area covers approximately 20 sq.Km.

0 100 200 300 400 500
Meters

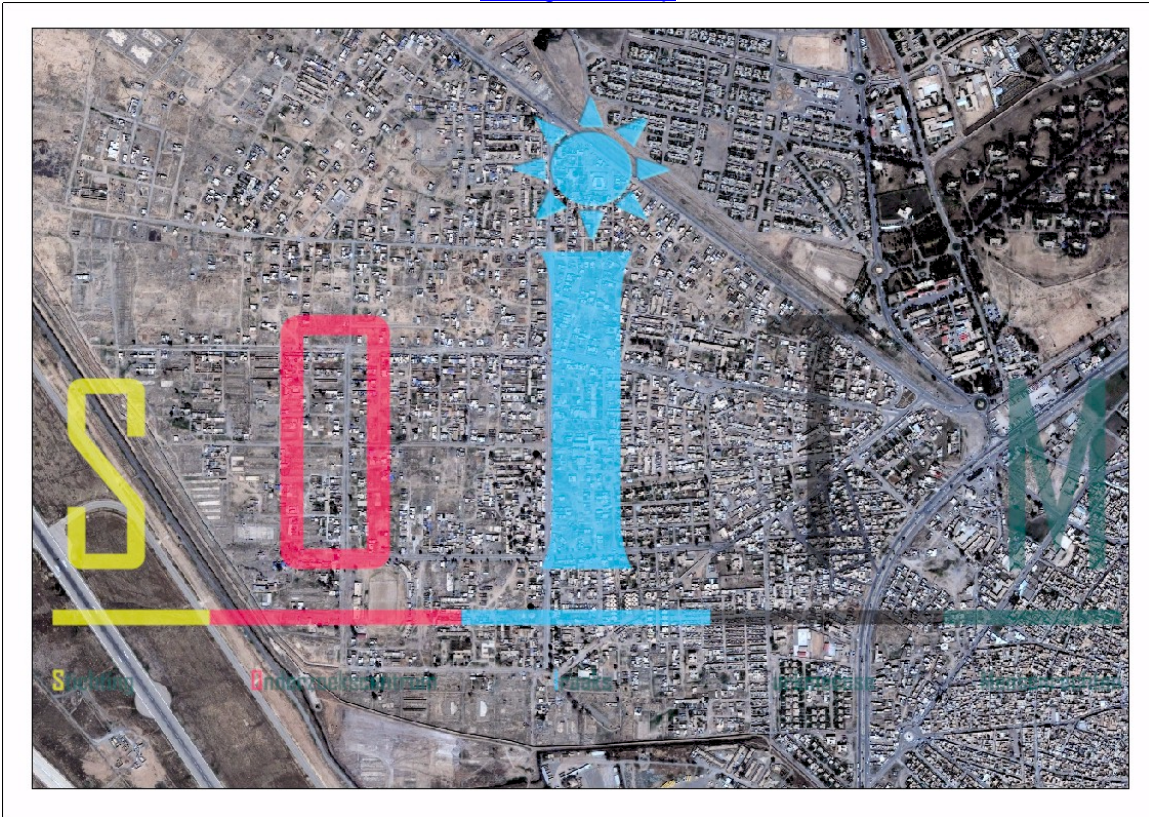


Map 3, Kerkuk city. The yellow color refers to the **majority** of lands built between 2003 and 2007

[Enlarge the Map](#)



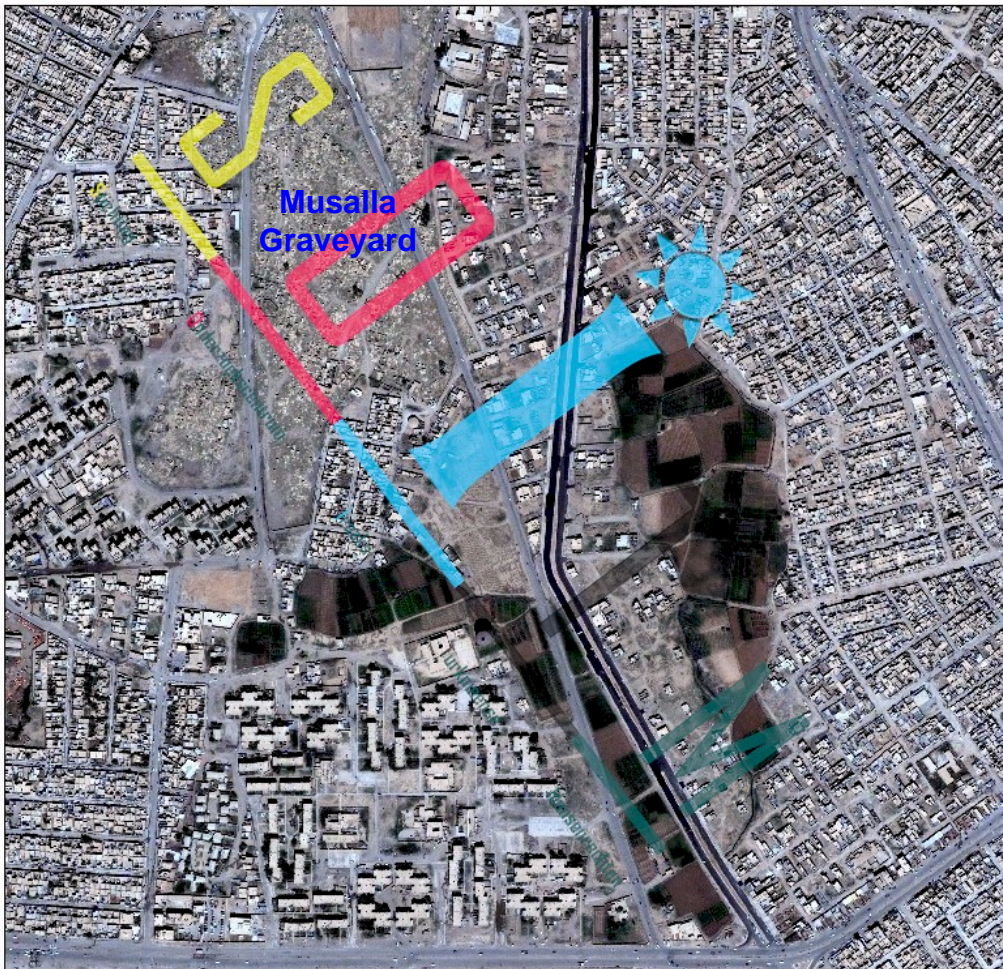
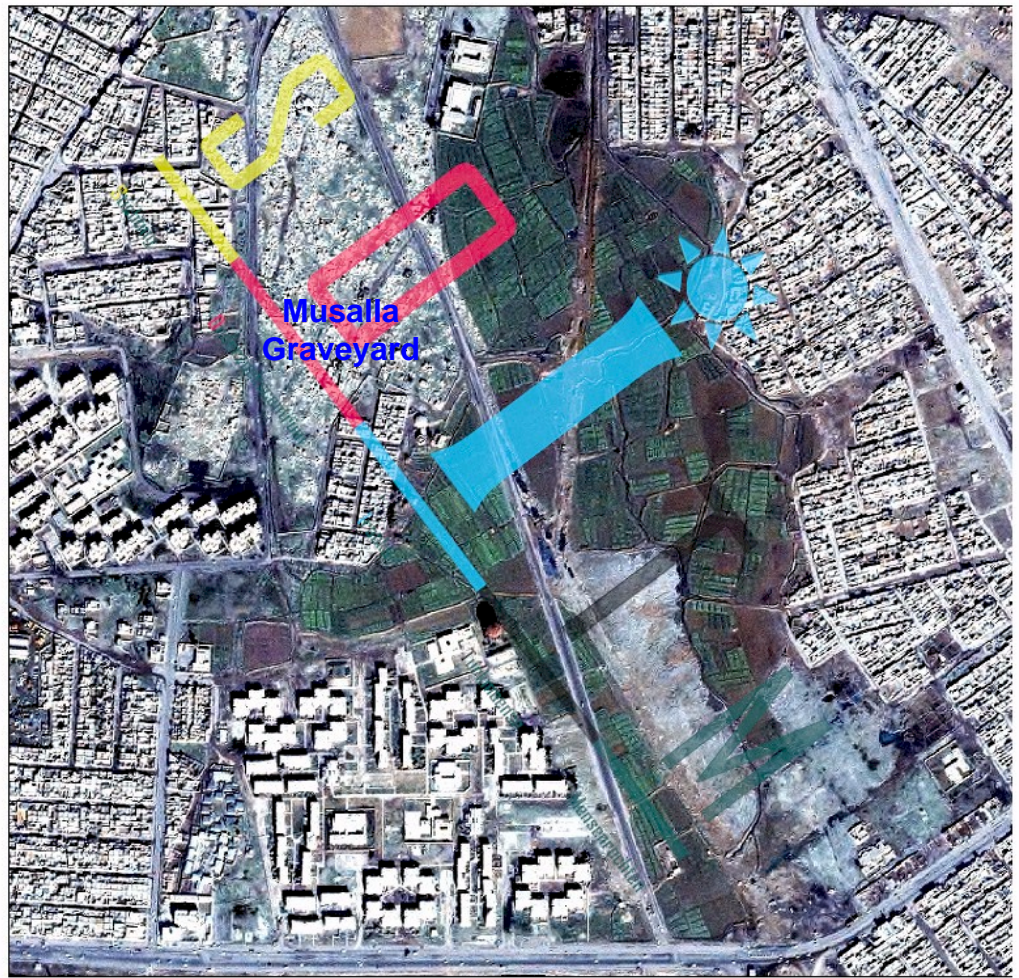
Map 4, Military Corps in 2002
[Enlarge the Map](#)



Map 5, Military Corps in 2007
[Enlarge the Map](#)

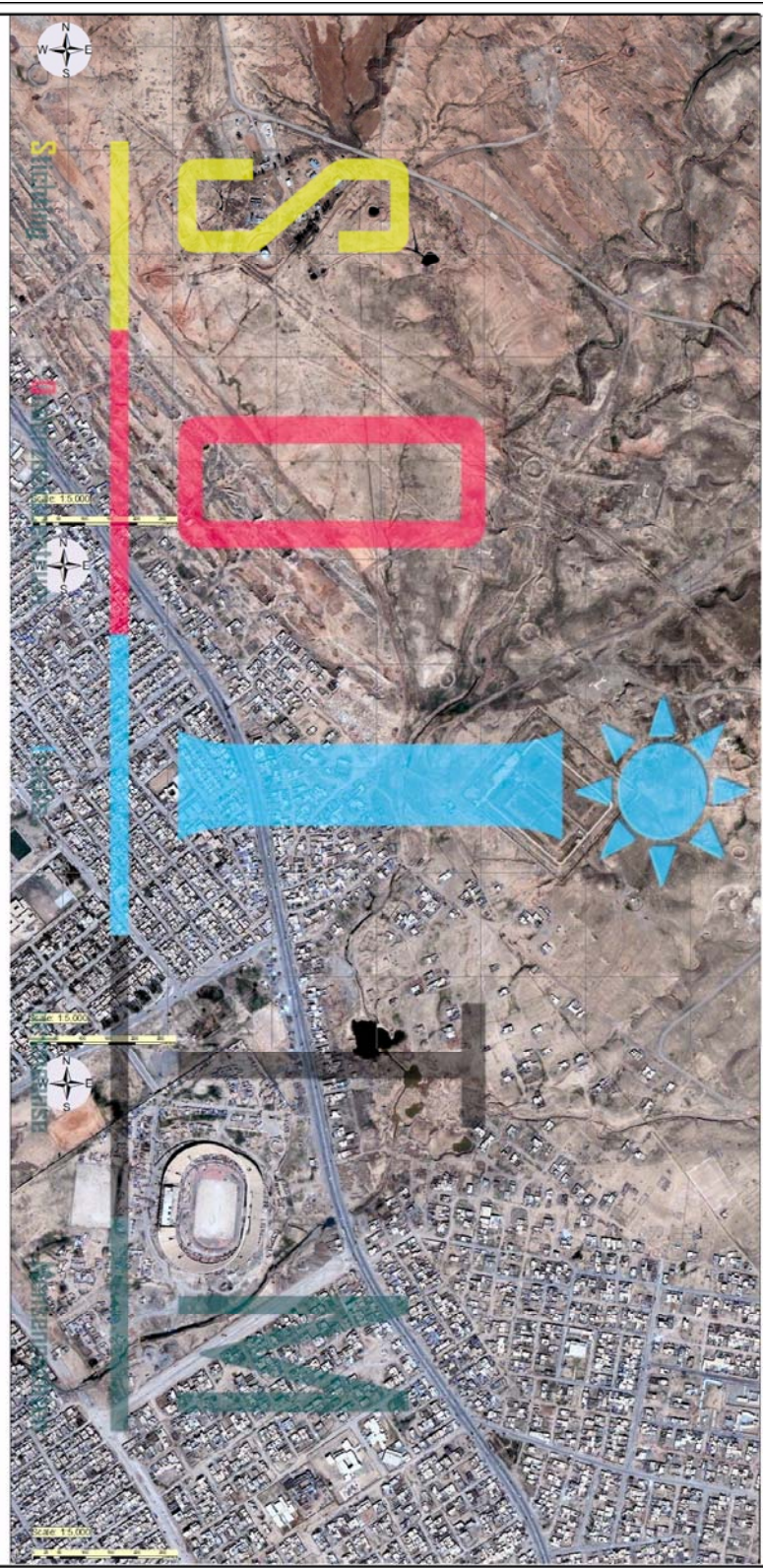
**Map 6, East and North
of Musalla Graveyard
- 2002.**

[Enlarge the Map](#)



**Map 7, East and North
of Musalla Graveyard
- 2007**

[Enlarge the Map](#)



Map 8, Eastern south of Shorja Neighborhood in 2002 (left) and in 2007 (Right)
[Enlarge the Map](#)